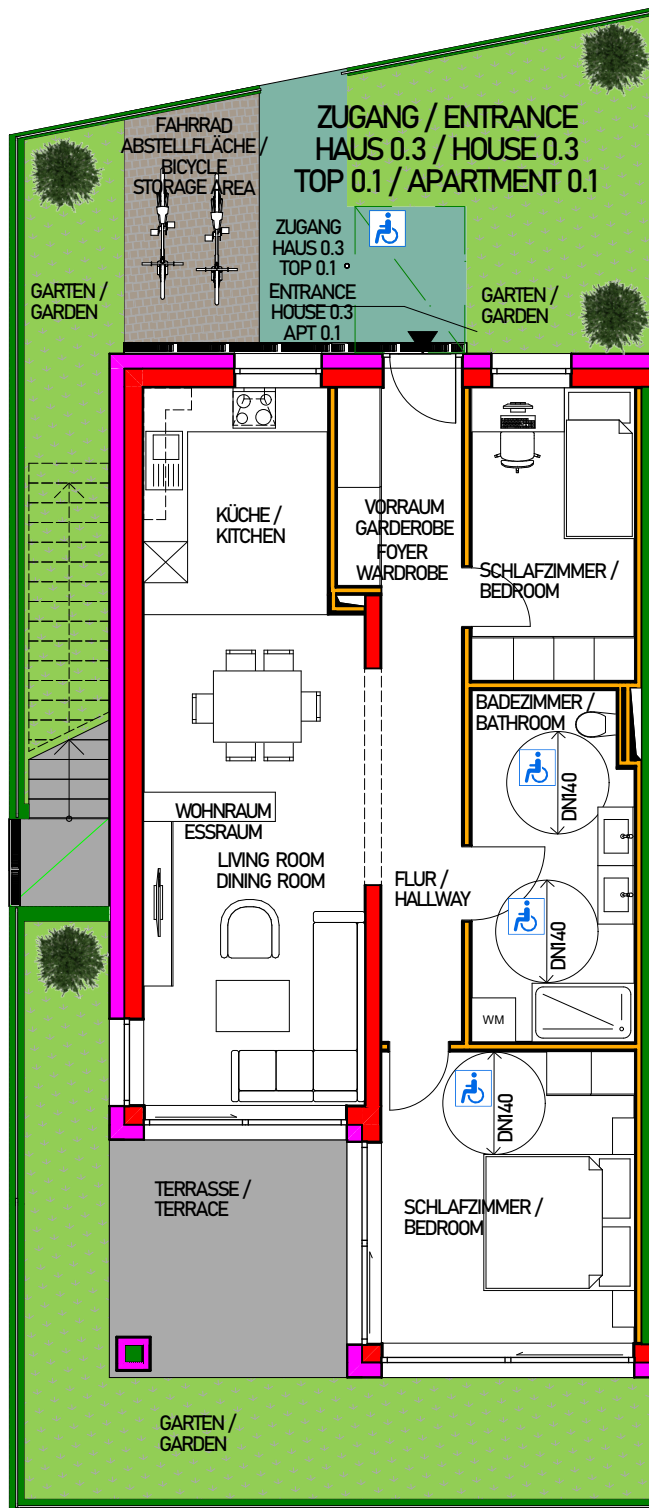


WIENERSTRASSE 9, A-7082 DONNERSKIRCHEN
 ÜBERSICHTSPLAN
 HAUS 0.3
 TOP 0.1 - ERDGESCHOSS

LAYOUT
 HOUSE 0.3
 APARTMENT 0.1 - GROUND FLOOR

BARRIEREFREI
 BARRIER -FREE



HOUSE 0.3 -
 APARTMENT 0.1
 ca. 73 m²
 GARDEN
 ca. 47 m²
 TERRASSE
 ca. 10 m²
 ENTRANCE
 ca. 8 m²
 PARKING LOT 1
 ca. 16 m²
 PARKING LOT 2
 ca. 18 m²

HAUS 3 - TOP 1
 ca. 73 m²
 GARTEN
 ca. 47 m²
 TERRASSE
 ca. 10 m²
 ZUGANG
 ca. 8 m²
 PARKPLATZ 1
 ca. 16 m²
 PARKPLATZ 2
 ca. 18 m²



Terra Atlas

IMMOBILIEN GMBH